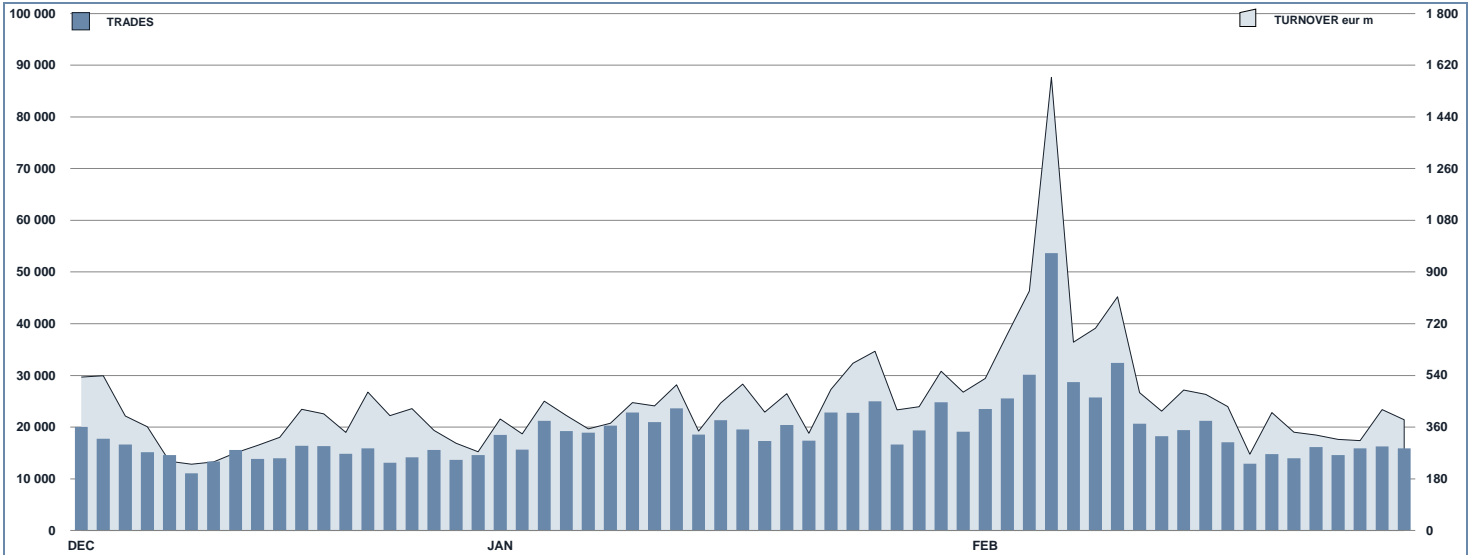




## ETFPlus Statistics

February 2018

### ETFPLUS DAILY TURNOVER



### MAIN INDICATORS

LISTED INSTRUMENT	LISTED		MONTH		AUM in MT		JANUARY 2018		FEBRUARY 2018		JAN - FEB 2018	
	END of MONTH	NEW LISTED	eur m	eur m	31/01/2018	28/02/2018	Trades	Turnover eur m	Trades	Turnover eur m	Trades	Turnover eur m
	ETF - DEVELOPED MARKET	228	7	24 270	24 190	127 183	4 411.1	142 187	5 411.44	269 370	9 822.50	
ETF - CORPORATE AND GOV BOND	252	15	24 306	24 943	69 342	2 037.5	62 088	2 122.80	131 430	4 160.30		
ETF - EMERGING MARKETS	80	0	4 838	4 692	35 061	578.1	29 429	661.07	64 490	1 239.13		
ETF - STYLE	90	0	2 560	2 731	12 704	223.4	12 243	253.34	24 947	476.78		
OTHERS	157	5	3 872	3 965	42 015	698.2	42 076	732.58	84 091	1 430.77		
ETC/ETN	315	0	6 013	5 901	159 690	1 842.6	148 436	1 680.44	308 126	3 523.06		
OPEN OICR	124	3	279	279	253	10.8	201	14.12	454	24.89		
<b>TOTAL</b>	<b>1 246</b>	<b>30</b>	<b>66 139</b>	<b>66 701</b>	<b>446 248</b>	<b>9 801.6</b>	<b>436 660</b>	<b>10 875.79</b>	<b>882 908</b>	<b>20 677.43</b>		

### MOST TRADED IN THE MONTH BY TRADES AND RELATIVE SPREAD

Name	Alphab.	ISIN	TRADES		SPREAD	
			number	% TOT	BBO	25 000 €
1 BOOST NATURAL GAS 3X LEVERAGE DAILY	3NGL	IE00B8VC8061	11 344	2.6%	0.65%	0.85%
2 BOOST WTI OIL 3X LEVERAGE DAILY	3OIL	IE00B7ZQC614	10 729	2.5%	0.19%	0.21%
3 LYXOR FTSEMIB DAI -2X XBR UCITS ETF ACC	XBRMIB	FR0010446666	9 885	2.3%	0.09%	0.09%
4 BOOST WTI OIL 3X SHORT DAILY	3OIS	IE00B7SXY86	9 250	2.1%	0.19%	0.22%
5 LYXOR FTSEMIB DAI 2X LEV UCITS ETF DIST	LEVMBIB	FR0010446658	8 701	2.0%	0.08%	0.09%
6 LYXOR FTSE MIB UCITS ETF - DIST	ETFMIB	FR0010010827	7 060	1.6%	0.05%	0.05%
7 BOOST FTSE MIB 3X LEVERAGE DAILY	3ITL	IE00B8NB3063	6 551	1.5%	0.13%	0.13%
8 LYXOR EURO STOXX 50 DR UCITS ETF - DIST	MSE	FR0007054358	6 363	1.5%	0.06%	0.06%
9 ETF5 3X DAILY SHORT FTSE MIB	IT5S	JE00B894R074	6 209	1.4%	0.14%	0.15%
# LYXOR FTSE IT MIDCAP PIR DR UCITS ETF AC	ITAMID	FR0011758085	6 194	1.4%	0.11%	0.12%

### MOST TRADED IN THE MONTH BY TURNOVER AND RELATIVE SPREAD

Name	Alphab.	ISIN	TURNOVER		SPREAD	
			eur m	% TOT	BBO	25 000 €
1 ISHARES CORE S&P 500 UCITS ETF USD ACC	CSSPX	IE00B5BMR087	353	3.3%	0.05%	0.05%
2 ISHARES EURO STOXX 50 UCITS ETF EUR DIST	EUE	IE0008471009	316	2.9%	0.05%	0.05%
3 ISHARES S&P 500 UCITS ETF USD DIST	IUSA	IE0031442068	315	2.9%	0.05%	0.05%
4 ISHARES MSCI WORLD EUR HDG UCITS ETF ACC	IWDE	IE00B441G979	253	2.3%	0.08%	0.09%
5 LYXOR EURO STOXX 50 DR UCITS ETF - DIST	MSE	FR0007054358	235	2.2%	0.06%	0.06%
6 ISHARES S&P 500 EUR HEDGED UCITS ETF ACC	IUSE	IE00B3ZWK018	215	2.0%	0.07%	0.08%
7 ISHARES MSCI JAPAN EUR HDG UCITS ETF ACC	IJPE	IE00B4Z25444	196	1.8%	0.08%	0.09%
8 LYXOR FTSE MIB UCITS ETF - DIST	ETFMIB	FR0010010827	186	1.7%	0.05%	0.05%
9 ISHARES STOXX EUROPE 600 UCITS ETF	EXSA	DE0002635307	164	1.5%	0.05%	0.05%
# BOOST WTI OIL 3X LEVERAGE DAILY	3OIL	IE00B7ZQC614	154	1.4%	0.19%	0.21%

### MOST TRADED IN THE YEAR BY TRADES AND RELATIVE SPREAD

Name	Alphab.	ISIN	TRADES		SPREAD	
			number	% TOT	BBO	25 000 €
1 BOOST NATURAL GAS 3X LEVERAGE DAILY	3NGL	IE00B8VC8061	27 279	3.1%	0.57%	0.73%
2 BOOST WTI OIL 3X LEVERAGE DAILY	3OIL	IE00B7ZQC614	22 544	2.6%	0.16%	0.17%
3 LYXOR FTSEMIB DAI -2X XBR UCITS ETF ACC	XBRMIB	FR0010446666	19 789	2.2%	0.08%	0.08%
4 LYXOR FTSEMIB DAI 2X LEV UCITS ETF DIST	LEVMBIB	FR0010446658	18 701	2.1%	0.07%	0.08%
5 BOOST WTI OIL 3X SHORT DAILY	3OIS	IE00B7SXY86	17 608	2.0%	0.16%	0.18%
6 LYXOR FTSE MIB UCITS ETF - DIST	ETFMIB	FR0010010827	15 001	1.7%	0.05%	0.05%
7 BOOST NATURAL GAS 3X SHORT DAILY	3NGS	IE00B76BRD76	14 857	1.7%	0.79%	0.91%
8 LYXOR FTSE IT MIDCAP PIR DR UCITS ETF AC	ITAMID	FR0011758085	13 543	1.5%	0.11%	0.12%
9 BOOST FTSE MIB 3X LEVERAGE DAILY	3ITL	IE00B8NB3063	13 101	1.5%	0.11%	0.12%
# ETF5 3X DAILY SHORT FTSE MIB	IT5S	JE00B894R074	12 151	1.4%	0.12%	0.13%

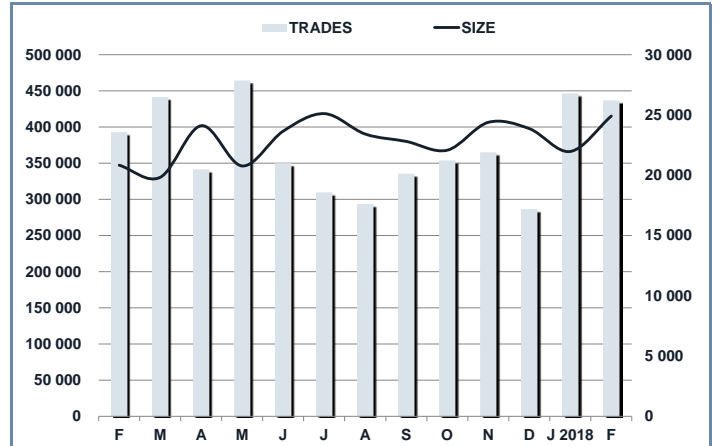
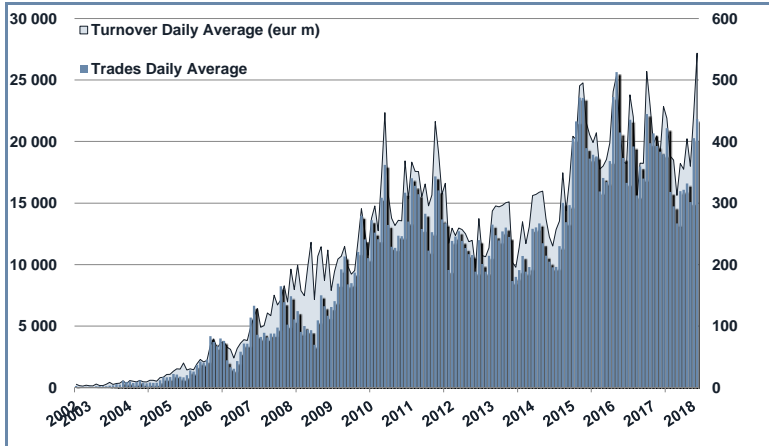
### MOST TRADED IN THE YEAR BY TURNOVER AND RELATIVE SPREAD

Name	Alphab.	ISIN	TURNOVER		SPREAD	
			eur m	% TOT	BBO	25 000 €
1 ISHARES CORE S&P 500 UCITS ETF USD ACC	CSSPX	IE00B5BMR087	575	2.8%	0.04%	0.04%
2 ISHARES EURO STOXX 50 UCITS ETF EUR DIST	EUE	IE0008471009	500	2.4%	0.05%	0.05%
3 ISHARES S&P 500 UCITS ETF USD DIST	IUSA	IE0031442068	449	2.2%	0.04%	0.05%
4 LYXOR FTSE MIB UCITS ETF - DIST	ETFMIB	FR0010010827	426	2.1%	0.05%	0.05%
5 LYXOR FTSEMIB DAI 2X LEV UCITS ETF DIST	LEVMBIB	FR0010446658	389	1.9%	0.07%	0.08%
6 LYXOR EURO STOXX 50 DR UCITS ETF - DIST	MSE	FR0007054358	365	1.8%	0.05%	0.05%
7 ISHARES S&P 500 EUR HEDGED UCITS ETF ACC	IUSE	IE00B3ZWK018	349	1.7%	0.06%	0.07%
8 ISHARES MSCI WORLD EUR HDG UCITS ETF ACC	IWDE	IE00B441G979	341	1.6%	0.08%	0.09%
9 ISHARES MSCI JAPAN EUR HDG UCITS ETF ACC	IJPE	IE00B4Z25444	339	1.6%	0.08%	0.08%
# BOOST WTI OIL 3X LEVERAGE DAILY	3OIL	IE00B7ZQC614	308	1.5%	0.16%	0.17%

TRADING BY SIZE OF TURNOVER

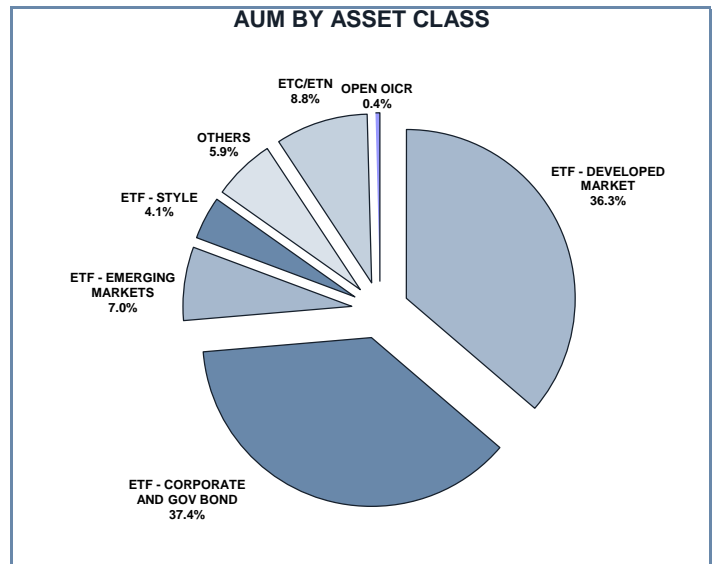
SIZE OF TURNOVER		JANUARY 2018		FEBRUARY 2018		YEAR 2018			
		Trades	Turnover eur m	Trades	Turnover eur m	Trades	% TOT	Turnover eur m	% TOT
-	500	40 748	9.5	37 975	9.0	78 723	8.9%	18.4	0.1%
500	1 000	32 590	24.3	30 177	22.8	62 767	7.1%	47.1	0.2%
1 000	2 000	55 657	80.6	52 610	76.3	108 267	12.3%	156.9	0.8%
2 000	3 000	38 948	96.3	35 476	87.3	74 424	8.4%	183.6	0.9%
3 000	4 000	28 469	98.4	26 253	91.5	54 722	6.2%	189.9	0.9%
4 000	5 000	25 045	113.1	24 664	111.4	49 709	5.6%	224.5	1.1%
5 000	6 000	20 486	110.9	19 778	107.6	40 264	4.6%	218.5	1.1%
6 000	7 000	12 421	80.5	12 082	78.4	24 503	2.8%	158.9	0.8%
7 000	8 000	10 987	82.1	11 326	85.0	22 313	2.5%	167.1	0.8%
8 000	9 000	11 690	99.0	11 038	93.4	22 728	2.6%	192.5	0.9%
9 000	10 000	11 760	112.2	10 729	102.2	22 489	2.5%	214.4	1.0%
10 000	15 000	40 600	485.4	41 868	495.5	82 468	9.3%	980.8	4.7%
15 000	20 000	20 918	365.3	21 783	378.7	42 701	4.8%	744.0	3.6%
20 000	25 000	16 569	372.9	15 414	345.5	31 983	3.6%	718.4	3.5%
25 000	30 000	10 617	290.1	10 672	291.8	21 289	2.4%	581.9	2.8%
30 000	35 000	8 158	264.7	10 734	349.4	18 892	2.1%	614.1	3.0%
35 000	40 000	8 374	313.1	9 778	365.0	18 152	2.1%	678.1	3.3%
40 000	45 000	5 508	233.1	5 301	224.4	10 809	1.2%	457.4	2.2%
45 000	50 000	5 225	247.9	4 620	219.9	9 845	1.1%	467.8	2.3%
50 000	75 000	15 638	924.7	15 126	902.0	30 764	3.5%	1 826.7	8.8%
75 000	100 000	6 853	599.7	7 342	639.5	14 195	1.6%	1 239.2	6.0%
100 000	125 000	5 521	608.4	6 038	663.5	11 559	1.3%	1 271.8	6.2%
125 000	150 000	2 466	338.2	2 542	347.9	5 008	0.6%	686.1	3.3%
150 000		11 000	3 851.3	13 334	4 787.9	24 334	2.8%	8 639.2	41.8%
<b>TOTAL</b>		<b>446 248</b>	<b>9 801.6</b>	<b>436 660</b>	<b>10 875.8</b>	<b>882 908</b>		<b>20 677.4</b>	

TRADING EVOLUTION



FOCUS

MONTH	INSTRUMENT WITH HIGHEST TURNOVER		INSTRUMENT WITH HIGHEST TRADES NUMBER	
	ALPHA CODE	EUR	ALPHA CODE	NUMBER
FEBRUARY	ETFMIB	294 127 552	3OIL	21 421
MARCH	3OIL	292 229 307	3OIL	33 615
APRIL	ETFMIB	437 288 315	3OIL	21 965
MAY	ETFMIB	524 941 058	3OIL	32 687
JUNE	ETFMIB	602 130 060	3OIL	22 766
JULY	ETFMIB	446 705 759	3OIL	19 196
AUGUST	ETFMIB	311 162 515	3OIL	17 504
SEPTEMBER	ETFMIB	302 756 584	3OIL	16 809
OCTOBER	ETFMIB	479 679 910	3OIL	16 922
NOVEMBER	ETFMIB	347 609 565	3NGL	16 217
DECEMBER	EUE	253 885 530	3NGL	14 188
JENUARY 2018	LEVMIB	242 597 461	3NGL	15 935
FEBRUARY	CSSPX	353 296 662	3NGL	11 344



## SPREAD

	SPREAD							
	BBO		5 000 €		15 000 €		25 000 €	
	SPREAD	% OBSER	SPREAD	% OBSER	SPREAD	% OBSER	SPREAD	% OBSER
<b>ETF - DEVELOPED MARKET</b>	<b>0.09%</b>	<b>100.00%</b>	<b>0.09%</b>	<b>100.00%</b>	<b>0.09%</b>	<b>99.99%</b>	<b>0.10%</b>	<b>99.99%</b>
EQUITY ITALY	0.09%	100.00%	0.09%	99.99%	0.09%	99.99%	0.09%	99.99%
EQUITY EUROPE - REGIONAL	0.08%	100.00%	0.08%	100.00%	0.08%	100.00%	0.08%	99.99%
EQUITY EUROPE - SINGLE COUNTRY	0.10%	100.00%	0.11%	100.00%	0.11%	100.00%	0.11%	99.99%
EQUITY WORLD	0.13%	100.00%	0.13%	99.99%	0.13%	99.98%	0.13%	99.97%
EQUITY NORTH AMERICA	0.09%	100.00%	0.09%	100.00%	0.09%	100.00%	0.09%	100.00%
EQUITY PACIFIC	0.11%	100.00%	0.11%	99.99%	0.11%	99.98%	0.12%	99.97%
EQUITY SHORT (DEVELOPED)	0.12%	100.00%	0.12%	100.00%	0.12%	99.99%	0.13%	99.97%
LEVERAGED LONG	0.11%	100.00%	0.12%	100.00%	0.12%	100.00%	0.12%	100.00%
LEVERAGED SHORT	0.12%	100.00%	0.12%	100.00%	0.12%	100.00%	0.12%	99.97%
<b>ETF - EMERGING MARKETS</b>	<b>0.17%</b>	<b>100.00%</b>	<b>0.18%</b>	<b>100.00%</b>	<b>0.18%</b>	<b>99.99%</b>	<b>0.18%</b>	<b>99.97%</b>
EQUITY EMERGING - AFRICA/MIDDLE EAST	0.59%	100.00%	0.63%	99.95%	0.65%	99.92%	0.67%	99.86%
EQUITY EMERGING - ASIA	0.24%	100.00%	0.24%	100.00%	0.25%	99.99%	0.26%	99.94%
EQUITY EMERGING - CENTRE/SOUTH AMERICA	0.36%	100.00%	0.37%	100.00%	0.38%	99.98%	0.39%	99.97%
EQUITY EMERGING - EAST EUROPE	0.25%	100.00%	0.25%	100.00%	0.26%	99.97%	0.27%	99.92%
EQUITY EMERGING - WORLD	0.11%	100.00%	0.11%	100.00%	0.11%	100.00%	0.11%	99.99%
<b>ETF - CORPORATE GOVERNMENT BONDS</b>	<b>0.10%</b>	<b>100.00%</b>	<b>0.10%</b>	<b>100.00%</b>	<b>0.11%</b>	<b>100.00%</b>	<b>0.11%</b>	<b>99.98%</b>
INFLATION	0.16%	100.00%	0.17%	100.00%	0.17%	99.99%	0.18%	99.99%
LIQUIDITY	0.03%	100.00%	0.03%	100.00%	0.04%	100.00%	0.04%	100.00%
CORPORATE BOND - EURO	0.07%	100.00%	0.07%	100.00%	0.07%	100.00%	0.08%	100.00%
CORPORATE BOND - EX EURO	0.12%	100.00%	0.12%	100.00%	0.12%	100.00%	0.12%	99.99%
CORPORATE BOND - EMERGING	0.37%	100.00%	0.37%	100.00%	0.38%	100.00%	0.39%	100.00%
CORPORATE BOND - WORLD	0.25%	100.00%	0.26%	100.00%	0.27%	100.00%	0.27%	100.00%
CORPORATE BOND - HIGH YIELD	0.12%	100.00%	0.12%	100.00%	0.13%	100.00%	0.14%	99.92%
AGGREGATE BOND	0.09%	100.00%	0.10%	100.00%	0.11%	99.95%	0.12%	99.74%
BOND SHORT	0.08%	100.00%	0.08%	100.00%	0.08%	100.00%	0.08%	99.99%
BOND LEVERAGED LONG	0.08%	100.00%	0.08%	100.00%	0.08%	100.00%	0.08%	100.00%
BOND LEVERAGED SHORT	0.06%	100.00%	0.06%	100.00%	0.07%	100.00%	0.08%	99.99%
GOVERNMENT BONDS - EMERGING	0.16%	100.00%	0.17%	100.00%	0.18%	100.00%	0.18%	99.99%
GOVERNMENT BONDS - EURO	0.06%	100.00%	0.06%	100.00%	0.06%	100.00%	0.07%	100.00%
GOVERNMENT BONDS - ITALY	0.07%	100.00%	0.07%	100.00%	0.08%	100.00%	0.08%	100.00%
GOVERNMENT BONDS - WORLD	0.16%	100.00%	0.18%	100.00%	0.20%	100.00%	0.21%	99.99%
GOVERNMENT BONDS - EX EURO	0.08%	100.00%	0.08%	100.00%	0.08%	100.00%	0.08%	100.00%
<b>ETF - STYLE</b>	<b>0.18%</b>	<b>100.00%</b>	<b>0.18%</b>	<b>100.00%</b>	<b>0.19%</b>	<b>99.98%</b>	<b>0.19%</b>	<b>99.94%</b>
EQUITY STYLE (DEVELOPED)	0.18%	100.00%	0.18%	100.00%	0.19%	99.98%	0.19%	99.95%
EQUITY STYLE (EMERGING)	0.42%	100.00%	0.43%	99.94%	0.43%	99.86%	0.43%	99.60%
<b>ETF - OTHERS</b>	<b>0.21%</b>	<b>100.00%</b>	<b>0.22%</b>	<b>99.99%</b>	<b>0.22%</b>	<b>99.98%</b>	<b>0.23%</b>	<b>99.92%</b>
EQUITY SECTORS (DEVELOPED)	0.20%	100.00%	0.20%	100.00%	0.20%	99.99%	0.21%	99.98%
EQUITY THEMATIC	0.25%	100.00%	0.26%	100.00%	0.27%	99.98%	0.28%	99.91%
COMMODITIES	0.18%	100.00%	0.18%	100.00%	0.18%	100.00%	0.18%	99.99%
CREDIT INDICES	0.25%	100.00%	0.33%	100.00%	0.38%	100.00%	0.39%	100.00%
REAL ESTATE	0.15%	100.00%	0.15%	99.99%	0.16%	99.99%	0.16%	99.99%
VOLATILITY INDICES	0.54%	100.00%	0.59%	99.98%	0.62%	99.89%	0.64%	99.33%
FLEXIBLE	0.86%	100.00%	0.89%	99.61%	0.92%	99.28%	0.92%	94.68%
<b>ETF</b>	<b>0.11%</b>	<b>100.00%</b>	<b>0.11%</b>	<b>100.00%</b>	<b>0.12%</b>	<b>99.99%</b>	<b>0.12%</b>	<b>99.98%</b>

Data obtained from 1 minute snapshots of the trading book (5 levels) during trading days of the relevant month.  
Market Spread: means the difference between bid and ask prices divided by the mid quote at which it was possible to buy and sell simultaneously the relevant amount.  
% Obser: means the percentage of observations at which it would be possible to buy and sell simultaneously the relevant amount.  
The average showed is the weighted average on AUM deposited in Monte Titoli is used: it's the average calculated taking into account the AUM (asset under management) deposited in Monte Titoli.

## News

February 6th amid market volatility, ETFplus recorded the highest trading volumes since inception: 53 649 trades worth 1.577 € billion  
New ETF issuer: J.P. Morgan Asset Management list for the first time 5 ETFs in Borsa Italiana  
New Fund issuer: FCS list for the first time 2 funds in Borsa Italiana

The Asset Under Management (AUM) in Italy sets a new record: €66.7 billion (€60.5 bn for ETFs, €5.9 bn for ETCs/ETNs and €0.279 bn for open-end funds) with a growth of 15.88% compared to February 2017

Markets Analysis  
Piazza degli Affari, 6 - 20123 Milano  
T +39 02 724261 | Fax +39 02 8646.4323  
e-mail: markets\_analysis@borsaitaliana.it  
www.borsaitaliana.it