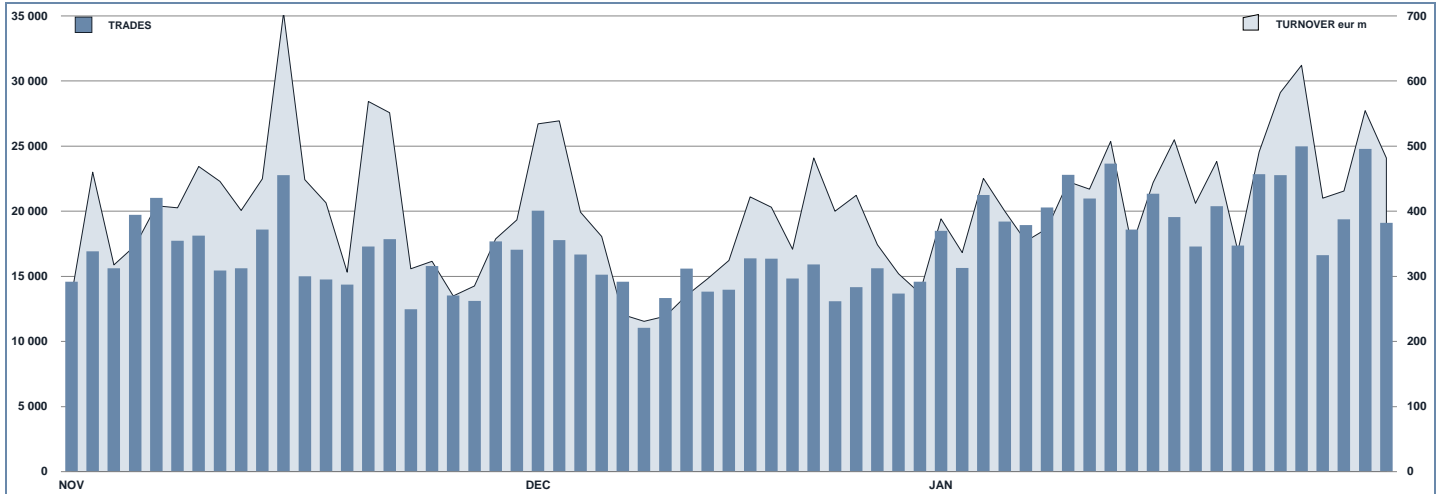




ETFPlus Statistics

January 2018

ETFPLUS DAILY TURNOVER



MAIN INDICATORS

	LISTED INSTRUMENT				TRADING					
	LISTED END OF MONTH	MONTH NEW LISTED	AUM in MT		NOVEMBER 2017		DECEMBER 2017		JANUARY 2018	
			eur m 29/12/2017	eur m 31/01/2018	Trades	Turnover eur m	Trades	Turnover eur m	Trades	Turnover eur m
ETF - DEVELOPED MARKET	227	2	23 986	24 270	90 962	4 196.3	77 837	3 169.1	127 183	4 411.1
ETF - CORPORATE AND GOV BOND	246	3	24 127	24 306	58 289	1 516.1	48 868	1 439.9	69 342	2 037.5
ETF - EMERGING MARKETS	80	0	4 584	4 838	25 798	516.5	18 894	414.5	35 061	578.1
ETF - STYLE	90	7	2 304	2 560	10 596	192.8	7 809	174.8	12 704	223.4
OTHERS	153	5	3 689	3 872	32 828	577.3	22 904	404.5	42 015	698.2
ETC/ETN	315	0	6 152	6 013	146 325	1 887.4	110 179	1 221.3	159 690	1 842.6
OPEN OICR	126	0	275	279	265	14.0	172	13.7	253	10.8
TOTAL	1 237	17	65 118	66 139	365 063	8 900.4	286 563	6 837.6	446 248	9 801.6

MOST TRADED IN THE MONTH BY TRADES AND RELATIVE SPREAD

Name	Alphab.	ISIN	TRADES		SPREAD		
			number	% TOT	BBO	25 000 €	0.61%
1 BOOST NATURAL GAS 3X LEVERAGE DAILY	3NGL	IE0088VC8061	15 935	3.6%	0.49%	0.61%	
2 BOOST WTI OIL 3X LEVERAGE DAILY	3OIL	IE0087ZQC614	11 815	2.6%	0.12%	0.13%	
3 LYXOR FTSEMIB DAI-2X LEV UCITS ETF DIST	LEVMB	FR0010446658	10 000	2.2%	0.06%	0.07%	
4 LYXOR FTSEMIB DAI-2X XBR UCITS ETF ACC	XBRMB	FR0010446666	9 904	2.2%	0.07%	0.07%	
5 BOOST NATURAL GAS 3X SHORT DAILY	3NGS	IE00876BRD76	9 557	2.1%	0.77%	0.88%	
6 BOOST WTI OIL 3X SHORT DAILY	3OIS	IE0087SXY986	8 358	1.9%	0.14%	0.15%	
7 LYXOR FTSE MIB UCITS ETF - DIST	ETFMB	FR0010010827	7 941	1.8%	0.05%	0.05%	
8 LYXOR FTSE ITAL MID CAP PIR DR UCITS ETF	ITAMD	FR0011758085	7 349	1.6%	0.10%	0.11%	
9 BOOST FTSE MIB 3X LEVERAGE DAILY	3ITL	IE0088NB3063	6 550	1.5%	0.10%	0.10%	
# EFTS 3X DAILY LONG FTSE MIB	IT3L	JE0088DVVK97	5 967	1.3%	0.11%	0.12%	

MOST TRADED IN THE MONTH BY TURNOVER AND RELATIVE SPREAD

Name	Alphab.	ISIN	TURNOVER		SPREAD		
			eur m	% TOT	BBO	25 000 €	0.07%
1 LYXOR FTSEMIB DAI 2X LEV UCITS ETF DIST	LEVMB	FR0010446658	243	2.5%	0.06%	0.07%	
2 LYXOR FTSE MIB UCITS ETF - DIST	ETFMB	FR0010010827	240	2.5%	0.05%	0.05%	
3 ISHARES CORE S&P 500 UCITS ETF USD ACC	CSSPX	IE0085BMR087	222	2.3%	0.03%	0.04%	
4 ISHARES EURO STOXX 50 UCITS ETF EUR DIST	EUE	IE0008471009	184	1.9%	0.05%	0.05%	
5 LYXOR FTSEMIB DAI-2X XBR UCITS ETF ACC	XBRMB	FR0010446666	160	1.6%	0.07%	0.07%	
6 BOOST WTI OIL 3X LEVERAGE DAILY	3OIL	IE0087ZQC614	155	1.6%	0.12%	0.13%	
7 DB X-TRACKERS DAX UCITS ETF DR	XDAX	LU0274211480	144	1.5%	0.04%	0.04%	
8 ISHARES MSCI JAPAN EUR HDG UCITS ETF ACC	IJPE	IE0084225144	143	1.5%	0.07%	0.07%	
9 ISHARES S&P 500 EUR HEDGED UCITS ETF ACC	IJSE	IE00832V0K18	134	1.4%	0.06%	0.06%	
# ISHARES S&P 500 UCITS ETF USD DIST	IUSA	IE0031442068	134	1.4%	0.03%	0.04%	

MOST TRADED IN THE YEAR BY TRADES AND RELATIVE SPREAD

Name	Alphab.	ISIN	TRADES		SPREAD		
			number	% TOT	BBO	25 000 €	0.61%
1 BOOST NATURAL GAS 3X LEVERAGE DAILY	3NGL	IE0088VC8061	15 935	3.6%	0.49%	0.61%	
2 BOOST WTI OIL 3X LEVERAGE DAILY	3OIL	IE0087ZQC614	11 815	2.6%	0.12%	0.13%	
3 LYXOR FTSEMIB DAI 2X LEV UCITS ETF DIST	LEVMB	FR0010446658	10 000	2.2%	0.06%	0.07%	
4 LYXOR FTSEMIB DAI-2X XBR UCITS ETF ACC	XBRMB	FR0010446666	9 904	2.2%	0.07%	0.07%	
5 BOOST NATURAL GAS 3X SHORT DAILY	3NGS	IE00876BRD76	9 557	2.1%	0.77%	0.88%	
6 BOOST WTI OIL 3X SHORT DAILY	3OIS	IE0087SXY986	8 358	1.9%	0.14%	0.15%	
7 LYXOR FTSE MIB UCITS ETF - DIST	ETFMB	FR0010010827	7 941	1.8%	0.05%	0.05%	
8 LYXOR FTSE ITAL MID CAP PIR DR UCITS ETF	ITAMD	FR0011758085	7 349	1.6%	0.10%	0.11%	
9 BOOST FTSE MIB 3X LEVERAGE DAILY	3ITL	IE0088NB3063	6 550	1.5%	0.10%	0.10%	
# EFTS 3X DAILY LONG FTSE MIB	IT3L	JE0088DVVK97	5 967	1.3%	0.11%	0.12%	

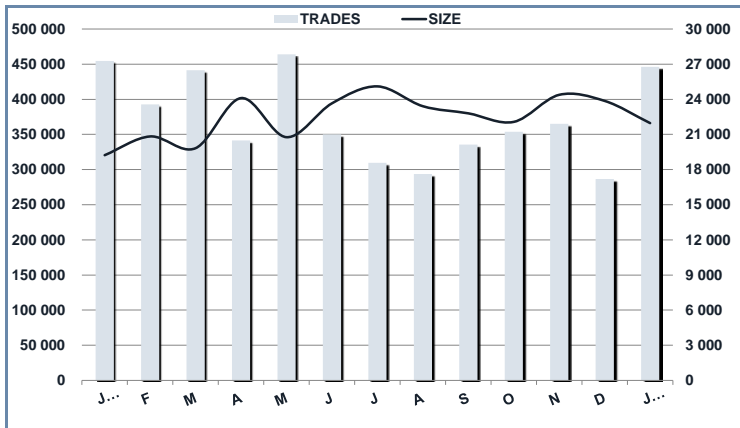
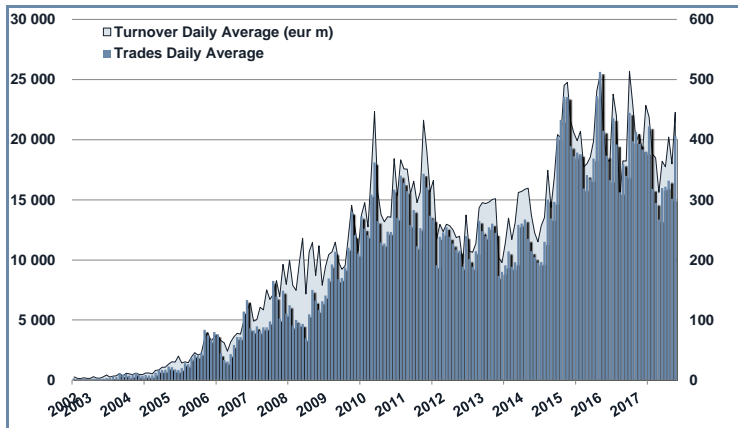
MOST TRADED IN THE YEAR BY TURNOVER AND RELATIVE SPREAD

Name	Alphab.	ISIN	TURNOVER		SPREAD		
			eur m	% TOT	BBO	25 000 €	0.07%
1 LYXOR FTSEMIB DAI 2X LEV UCITS ETF DIST	LEVMB	FR0010446658	243	2.5%	0.06%	0.07%	
2 LYXOR FTSE MIB UCITS ETF - DIST	ETFMB	FR0010010827	240	2.5%	0.05%	0.05%	
3 ISHARES CORE S&P 500 UCITS ETF USD ACC	CSSPX	IE0085BMR087	222	2.3%	0.03%	0.04%	
4 ISHARES EURO STOXX 50 UCITS ETF EUR DIST	EUE	IE0008471009	184	1.9%	0.05%	0.05%	
5 LYXOR FTSEMIB DAI-2X XBR UCITS ETF ACC	XBRMB	FR0010446666	160	1.6%	0.07%	0.07%	
6 BOOST WTI OIL 3X LEVERAGE DAILY	3OIL	IE0087ZQC614	155	1.6%	0.12%	0.13%	
7 DB X-TRACKERS DAX UCITS ETF DR	XDAX	LU0274211480	144	1.5%	0.04%	0.04%	
8 ISHARES MSCI JAPAN EUR HDG UCITS ETF ACC	IJPE	IE0084225144	143	1.5%	0.07%	0.07%	
9 ISHARES S&P 500 EUR HEDGED UCITS ETF ACC	IJSE	IE00832V0K18	134	1.4%	0.06%	0.06%	
# ISHARES S&P 500 UCITS ETF USD DIST	IUSA	IE0031442068	134	1.4%	0.03%	0.04%	

TRADING BY SIZE OF TURNOVER

SIZE OF TURNOVER		DECEMBER 2017		JANUARY 2018		YEAR 2018			
		Trades	Turnover eur m	Trades	Turnover eur m	Trades	% TOT	Turnover eur m	% TOT
-	500	28 555	6.6	40 748	9.5	40 748	9.1%	9.5	0.1%
500	1 000	21 246	15.8	32 590	24.3	32 590	7.3%	24.3	0.2%
1 000	2 000	36 209	52.7	55 657	80.6	55 657	12.5%	80.6	0.8%
2 000	3 000	23 585	58.2	38 948	96.3	38 948	8.7%	96.3	1.0%
3 000	4 000	16 452	57.3	28 469	98.4	28 469	6.4%	98.4	1.0%
4 000	5 000	14 992	67.4	25 045	113.1	25 045	5.6%	113.1	1.2%
5 000	6 000	11 219	60.8	20 486	110.9	20 486	4.6%	110.9	1.1%
6 000	7 000	8 061	52.3	12 421	80.5	12 421	2.8%	80.5	0.8%
7 000	8 000	7 240	54.2	10 987	82.1	10 987	2.5%	82.1	0.8%
8 000	9 000	6 997	59.4	11 690	99.0	11 690	2.6%	99.0	1.0%
9 000	10 000	7 346	70.0	11 760	112.2	11 760	2.6%	112.2	1.1%
10 000	15 000	24 308	290.9	40 600	485.4	40 600	9.1%	485.4	5.0%
15 000	20 000	14 550	256.2	20 918	365.3	20 918	4.7%	365.3	3.7%
20 000	25 000	11 802	262.2	16 569	372.9	16 569	3.7%	372.9	3.8%
25 000	30 000	7 486	204.4	10 617	290.1	10 617	2.4%	290.1	3.0%
30 000	35 000	6 264	203.4	8 158	264.7	8 158	1.8%	264.7	2.7%
35 000	40 000	5 362	200.7	8 374	313.1	8 374	1.9%	313.1	3.2%
40 000	45 000	3 420	145.0	5 508	233.1	5 508	1.2%	233.1	2.4%
45 000	50 000	3 120	149.0	5 225	247.9	5 225	1.2%	247.9	2.5%
50 000	75 000	11 122	653.2	15 638	924.7	15 638	3.5%	924.7	9.4%
75 000	100 000	4 491	390.5	6 853	599.7	6 853	1.5%	599.7	6.1%
100 000	125 000	3 275	360.4	5 521	608.4	5 521	1.2%	608.4	6.2%
125 000	150 000	1 736	238.8	2 466	338.2	2 466	0.6%	338.2	3.5%
150 000		7 725	2 928.4	11 000	3 851.3	11 000	2.5%	3 851.3	39.3%
TOTAL		286 563	6 837.6	446 248	9 801.6	446 248		9 801.6	

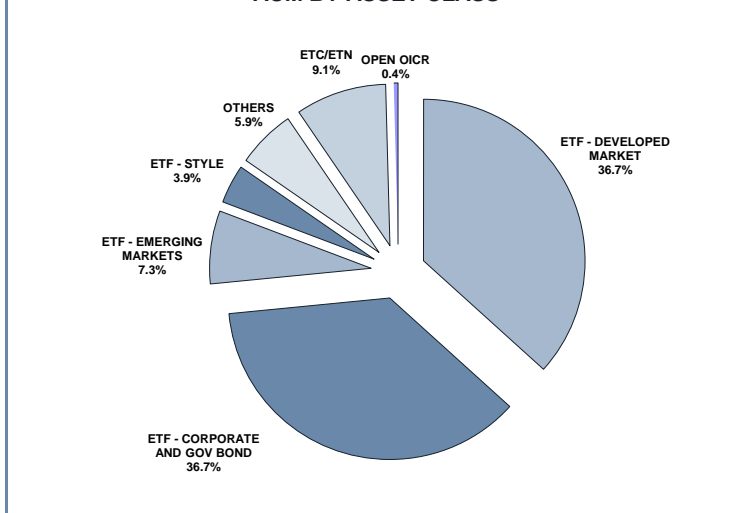
TRADING EVOLUTION



FOCUS

MONTH	INSTRUMENT WITH HIGHEST TURNOVER		INSTRUMENT WITH HIGHEST TRADES NUMBER	
	ALPHA CODE	EUR	ALPHA CODE	NUMBER
JANUARY 2017	3OIL	306 062 721	3OIL	27 427
FEBRUARY	ETFMIB	294 127 552	3OIL	21 421
MARCH	3OIL	292 229 307	3OIL	33 615
APRIL	ETFMIB	437 288 315	3OIL	21 965
MAY	ETFMIB	524 941 058	3OIL	32 687
JUNE	ETFMIB	602 130 060	3OIL	22 766
JULY	ETFMIB	446 705 759	3OIL	19 196
AUGUST	ETFMIB	311 162 515	3OIL	17 504
SEPTEMBER	ETFMIB	302 756 584	3OIL	16 809
OCTOBER	ETFMIB	479 679 910	3OIL	16 922
NOVEMBER	ETFMIB	347 609 565	3NGL	16 217
DECEMBER	EUE	253 885 530	3NGL	14 188
JANUARY 2018	LEVMI	242 597 461	3NGL	15 935

AUM BY ASSET CLASS



SPREAD

	SPREAD							
	BBO		5 000 €		15 000 €		25 000 €	
	SPREAD	% OBSER	SPREAD	% OBSER	SPREAD	% OBSER	SPREAD	% OBSER
ETF - DEVELOPED MARKET	0.08%	100.00%	0.08%	100.00%	0.08%	100.00%	0.08%	99.99%
EQUITY ITALY	0.08%	100.00%	0.08%	100.00%	0.08%	100.00%	0.08%	99.99%
EQUITY EUROPE - REGIONAL	0.07%	100.00%	0.07%	100.00%	0.07%	100.00%	0.07%	100.00%
EQUITY EUROPE - SINGLE COUNTRY	0.10%	100.00%	0.11%	100.00%	0.11%	99.99%	0.11%	99.98%
EQUITY WORLD	0.11%	100.00%	0.11%	99.99%	0.11%	99.99%	0.11%	99.98%
EQUITY NORTH AMERICA	0.07%	100.00%	0.07%	100.00%	0.08%	100.00%	0.08%	100.00%
EQUITY PACIFIC	0.09%	100.00%	0.09%	100.00%	0.10%	100.00%	0.10%	99.99%
EQUITY SHORT (DEVELOPED)	0.13%	100.00%	0.13%	100.00%	0.13%	100.00%	0.13%	100.00%
LEVERAGED LONG	0.09%	100.00%	0.09%	100.00%	0.09%	100.00%	0.09%	100.00%
LEVERAGED SHORT	0.10%	100.00%	0.10%	100.00%	0.10%	100.00%	0.10%	100.00%
ETF - EMERGING MARKETS	0.15%	100.00%	0.15%	99.99%	0.16%	99.99%	0.16%	99.98%
EQUITY EMERGING - AFRICA/MIDDLE EAST	0.46%	100.00%	0.49%	99.99%	0.52%	99.98%	0.54%	99.93%
EQUITY EMERGING - ASIA	0.19%	100.00%	0.20%	100.00%	0.21%	100.00%	0.21%	99.99%
EQUITY EMERGING - CENTRE/SOUTH AMERICA	0.32%	100.00%	0.34%	100.00%	0.35%	99.98%	0.36%	99.88%
EQUITY EMERGING - EAST EUROPE	0.22%	100.00%	0.22%	100.00%	0.23%	99.98%	0.24%	99.97%
EQUITY EMERGING - WORLD	0.10%	100.00%	0.10%	99.99%	0.10%	99.98%	0.10%	99.98%
ETF - CORPORATE GOVERNMENT BONDS	0.09%	100.00%	0.09%	100.00%	0.09%	100.00%	0.10%	99.99%
INFLATION	0.14%	100.00%	0.15%	100.00%	0.15%	99.99%	0.16%	99.99%
LIQUIDITY	0.04%	100.00%	0.04%	100.00%	0.04%	100.00%	0.04%	100.00%
CORPORATE BOND - EURO	0.07%	100.00%	0.07%	100.00%	0.07%	100.00%	0.07%	100.00%
CORPORATE BOND - EX EURO	0.11%	100.00%	0.11%	100.00%	0.11%	100.00%	0.11%	99.99%
CORPORATE BOND - EMERGING	0.29%	100.00%	0.30%	100.00%	0.31%	100.00%	0.32%	99.95%
CORPORATE BOND - WORLD	0.20%	100.00%	0.20%	100.00%	0.21%	100.00%	0.22%	100.00%
CORPORATE BOND - HIGH YIELD	0.10%	100.00%	0.11%	100.00%	0.11%	100.00%	0.12%	99.96%
AGGREGATE BOND	0.09%	100.00%	0.10%	100.00%	0.11%	100.00%	0.11%	100.00%
BOND SHORT	0.08%	100.00%	0.08%	100.00%	0.08%	100.00%	0.08%	100.00%
BOND LEVERAGED LONG	0.09%	100.00%	0.09%	100.00%	0.09%	100.00%	0.09%	100.00%
BOND LEVERAGED SHORT	0.07%	100.00%	0.07%	100.00%	0.07%	100.00%	0.08%	99.99%
GOVERNMENT BONDS - EMERGING	0.12%	100.00%	0.13%	100.00%	0.13%	99.99%	0.14%	99.97%
GOVERNMENT BONDS - EURO	0.06%	100.00%	0.06%	100.00%	0.06%	100.00%	0.07%	100.00%
GOVERNMENT BONDS - ITALY	0.07%	100.00%	0.07%	100.00%	0.08%	100.00%	0.08%	100.00%
GOVERNMENT BONDS - WORLD	0.14%	100.00%	0.15%	100.00%	0.17%	100.00%	0.18%	99.99%
GOVERNMENT BONDS - EX EURO	0.08%	100.00%	0.08%	100.00%	0.09%	100.00%	0.09%	99.99%
ETF - STYLE	0.17%	100.00%	0.17%	100.00%	0.17%	99.99%	0.17%	99.99%
EQUITY STYLE (DEVELOPED)	0.16%	100.00%	0.17%	100.00%	0.17%	99.99%	0.17%	99.99%
EQUITY STYLE (EMERGING)	0.36%	100.00%	0.38%	99.95%	0.38%	99.92%	0.38%	99.77%
ETF - OTHERS	0.19%	100.00%	0.19%	99.99%	0.20%	99.98%	0.21%	99.93%
EQUITY SECTORS (DEVELOPED)	0.18%	100.00%	0.19%	100.00%	0.19%	100.00%	0.19%	99.99%
EQUITY SECTORS (EMERGING)	0.00%	0.00%	0.00%	0.00%	0.00%	0.00%	0.00%	0.00%
EQUITY THEMATIC	0.21%	100.00%	0.22%	100.00%	0.23%	99.96%	0.24%	99.86%
COMMODITIES	0.17%	100.00%	0.17%	100.00%	0.18%	100.00%	0.18%	99.99%
CREDIT INDICES	0.25%	100.00%	0.32%	100.00%	0.36%	100.00%	0.37%	100.00%
REAL ESTATE	0.13%	100.00%	0.13%	100.00%	0.13%	100.00%	0.14%	100.00%
VOLATILITY INDICES	0.28%	100.00%	0.32%	100.00%	0.35%	100.00%	0.36%	100.00%
FLEXIBLE	0.74%	100.00%	0.77%	99.15%	0.82%	98.91%	0.85%	97.63%
ETF	0.10%	100.00%	0.10%	100.00%	0.10%	100.00%	0.11%	99.99%

Data obtained from 1 minute snapshots of the trading book (5 levels) during trading days of the relevant month.

Market Spread: means the difference between bid and ask prices divided by the mid quote at which it was possible to buy and sell simultaneously the relevant amount.

% Obser: means the percentage of observations at which it would be possible to buy and sell simultaneously the relevant amount.

The average showed is the weighted average on AUM deposited in Monte Titoli is used: it's the average calculated taking into account the AUM (asset under management) deposited in Monte Titoli.

News

During the last month, ETFplus market of Borsa Italiana welcomed a new ETF issuer: Franklin Templeton listed their first 5 ETFs.

Here below the list of new instruments listed in January:

- UBS (Irl) ETF plc – MSCI ACWI Socially Responsible UCITS ETF (hedged to EUR) A-acc
- PowerShares USD Corporate Bond UCITS ETF
- PowerShares Euro Corporate Bond UCITS ETF
- PowerShares Emerging Markets USD Bond UCITS ETF
- AMUNDI ETF ISTOXX EUROPE MULTI-FACTOR MARKET NEUTRAL UCITS ETF
- AMUNDI S&P GLOBAL LUXURY UCITS ETF - EUR
- AMUNDI MSCI WORLD ENERGY UCITS ETF - EUR
- AMUNDI MSCI WORLD FINANCIALS UCITS ETF - EUR
- AMUNDI FTSE EPRA EUROPE REAL ESTATE UCITS ETF - EUR
- AMUNDI FTSE MIB UCITS ETF - EUR
- AMUNDI S&P 500 BUYBACK UCITS ETF - EUR
- Franklin LibertyQ Emerging Markets UCITS ETF (USD Acc)
- Franklin LibertyQ European Dividend UCITS ETF (EUR Distr)
- Franklin LibertyQ Global Dividend UCITS ETF (USD Distr)
- Franklin LibertyQ Global Equity SRI UCITS ETF (USD Acc)
- Franklin LibertyQ US Equity UCITS ETF (USD Acc)
- PowerShares Italian PIR Multi-Asset Portfolio UCITS ETF

Markets Analysis
Piazza degli Affari, 6 - 20123 Milano
T +39 02 724261 | Fax +39 02 8646.4323
e-mail: markets_analysis@borsaitaliana.it
www.borsaitaliana.it



London
Stock Exchange Group

This document contains text, data, graphics, photographs, illustrations, artwork, names, logos, trade marks, service marks and information ("Information") connected with Borsa Italiana S.p.A. ("Borsa Italiana").

All reasonable efforts have been made to ensure that the information in this document was correct at the time of publication. However, Borsa Italiana Spa accepts no liability for decisions taken, or systems-related or other work carried out by any party based on this document. The publication of this document does not represent solicitation, by Borsa Italiana, of public saving and is not to be considered as a recommendation by Borsa Italiana as to the suitability of the investment, if any, herein described.

© January 2018 Borsa Italiana S.p.A. All rights reserved.