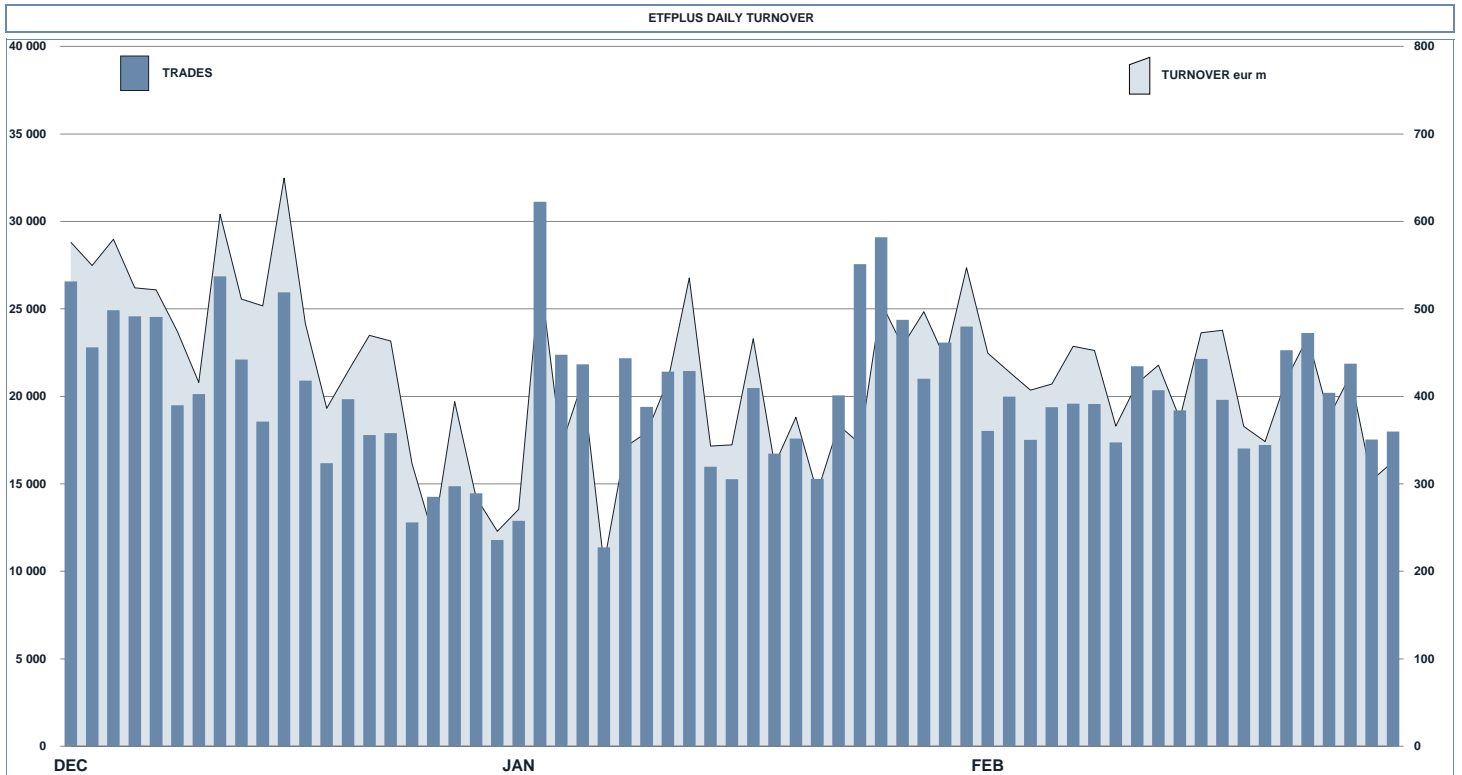




ETFPlus Statistics

February 2017



	LISTED INSTRUMENT				TRADING					
	LISTED END OF MONTH	MONTH NEW LISTED	AUM in MT		JANUARY 2017		FEBRUARY 2017		JAN - FEB 2017	
			eur m 31/01/2017	eur m 28/02/2017	Trades	Turnover eur m	Trades	Turnover eur m	Trades	Turnover eur m
ETF - DEVELOPED MARKET	210	5	21 017.57	21 975.89	99 451	3 286.62	86 703	3 124.03	186 154	6 410.65
ETF - CORPORATE AND GOV BOND	222	3	20 079.91	21 336.13	85 691	2 078.59	74 227	2 041.47	159 918	4 120.06
ETF - EMERGING MARKETS	84	1	3 494.20	3 863.18	35 701	600.28	31 179	530.28	66 880	1 130.55
ETF - STYLE	77	0	1 874.91	1 975.18	12 450	159.02	9 841	132.44	22 291	291.47
OTHERS	150	0	2 664.85	2 875.31	28 019	510.58	29 131	506.54	57 150	1 017.12
ETC/ETN	304	2	5 050.99	5 426.43	193 108	2 095.78	161 537	1 837.59	354 645	3 933.37
OPEN OICR	129	1	112.88	121.84	156	9.02	167	8.16	323	17.18
<b>TOTAL</b>	<b>1 176</b>	<b>12</b>	<b>54 295.31</b>	<b>57 573.95</b>	<b>454 576</b>	<b>8 739.90</b>	<b>392 785</b>	<b>8 180.50</b>	<b>847 361</b>	<b>16 920.40</b>

MOST TRADED IN THE MONTH BY TRADES AND RELATIVE SPREAD

Name	Alphab.	ISIN	TRADES number	% TOT	BBO	SPREAD 25 000 €
1 BOOST WTI OIL 3X LEVERAGE DAILY	3OIL	IE00B7ZQC614	21 421	5.5%	0.17%	0.20%
2 BOOST NATURAL GAS 3X LEVERAGE DAILY	3NGL	IE00B8VC0611	19 131	4.9%	0.40%	0.65%
3 BOOST WTI OIL 3X SHORT DAILY	3OIS	IE00B7SX5Y86	12 201	3.1%	0.13%	0.20%
4 LYXOR UCITS ETF FTSE MIB DAILY LEVERAGED	LEVMB	FR0010446658	9 030	2.3%	0.11%	0.11%
5 LYXOR UCITS ETF FTSE MIB DAI DOU SHT XBR	XBRMB	FR0010446658	7 962	2.0%	0.14%	0.14%
6 BOOST NATURAL GAS 3X SHORT DAILY	3NGS	IE00B76BRD76	7 007	1.8%	0.40%	0.45%
7 ETFS PHYSICAL GOLD	PHAU	JE00B1VS3770	6 023	1.5%	0.04%	0.04%
8 BOOST FTSE MIB 3X SHORT DAILY	3ITS	IE00B873CW36	5 444	1.4%	0.15%	0.16%
9 LYXOR UCITS ETF FTSE MIB	ETFMIB	FR0010010827	5 195	1.3%	0.05%	0.05%
10 BOOST FTSE MIB 3X LEVERAGE DAILY	3ITL	IE00B8NB3063	4 874	1.2%	0.16%	0.16%

MOST TRADED IN THE MONTH BY TURNOVER AND RELATIVE SPREAD

Name	Alphab.	ISIN	TURNOVER eur m	% TOT	BBO	SPREAD 25 000 €
1 LYXOR UCITS ETF FTSE MIB	ETFMIB	FR0010010827	294	3.6%	0.05%	0.05%
2 BOOST WTI OIL 3X LEVERAGE DAILY	3OIL	IE00B7ZQC614	243	3.0%	0.17%	0.20%
3 LYXOR UCITS ETF FTSE MIB DAI DOU SHT XBR	XBRMB	FR0010446658	192	2.3%	0.14%	0.14%
4 ISHARES EURO STOXX 50 UCITS ETF EUR DIST	EUE	IE0008471009	179	2.2%	0.05%	0.05%
5 ETFS PHYSICAL GOLD	PHAU	JE00B1VS3770	178	2.2%	0.04%	0.04%
6 BOOST WTI OIL 3X SHORT DAILY	3OIS	IE00B7SX5Y86	151	1.8%	0.13%	0.20%
7 LYXOR UCITS ETF FTSE MIB DAILY LEVERAGED	LEVMB	FR0010446658	149	1.8%	0.11%	0.11%
8 LYXOR EURO STOXX 50 (DR) UCITS ETF	MSE	FR0007054358	145	1.8%	0.05%	0.05%
9 ISHARES CORE S&P 500 UCITS ETF USD ACC	CSSPX	IE00B58MR087	112	1.4%	0.03%	0.03%
10 ISHARES MSCI EUROPE UCITS ETF EUR DIST	IMEU	IE00B1Y2SC21	108	1.3%	0.06%	0.07%

MOST TRADED IN THE YEAR BY TRADES AND RELATIVE SPREAD

Name	Alphab.	ISIN	TRADES number	% TOT	BBO	SPREAD 25 000 €
1 BOOST WTI OIL 3X LEVERAGE DAILY	3OIL	IE00B7ZQC614	48 848	5.8%	0.18%	0.21%
2 BOOST NATURAL GAS 3X LEVERAGE DAILY	3NGL	IE00B8VC0611	42 492	5.0%	0.43%	0.65%
3 BOOST WTI OIL 3X SHORT DAILY	3OIS	IE00B7SX5Y86	23 886	2.8%	0.15%	0.25%
4 LYXOR UCITS ETF FTSE MIB DAILY LEVERAGED	LEVMB	FR0010446658	22 049	2.6%	0.10%	0.11%
5 LYXOR UCITS ETF FTSE MIB DAI DOU SHT XBR	XBRMB	FR0010446658	17 418	2.1%	0.14%	0.15%
6 BOOST NATURAL GAS 3X SHORT DAILY	3NGS	IE00B76BRD76	17 217	2.0%	0.53%	0.88%
7 ETFS 2X DAILY LONG WTI CRUDE OIL	LOL	JE00BDD09Q840	13 905	1.6%	0.17%	0.28%
8 BOOST FTSE MIB 3X SHORT DAILY	3ITS	IE00B873CW36	12 332	1.5%	0.16%	0.16%
9 LYXOR UCITS ETF FTSE MIB	ETFMIB	FR0010010827	11 581	1.4%	0.05%	0.05%
10 ETFS PHYSICAL GOLD	PHAU	JE00B1VS3770	10 297	1.2%	0.05%	0.05%

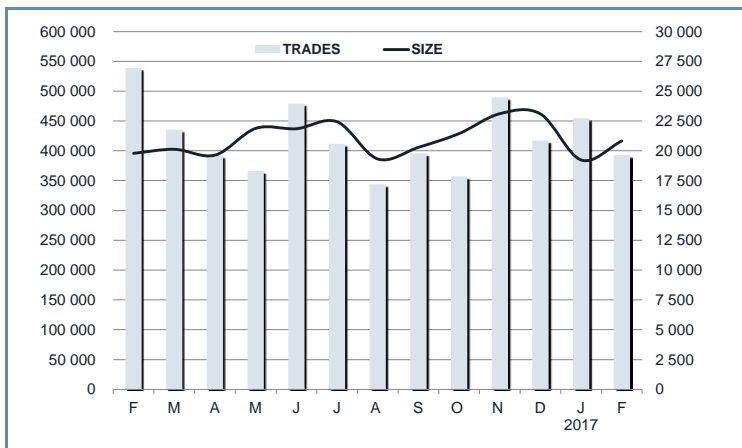
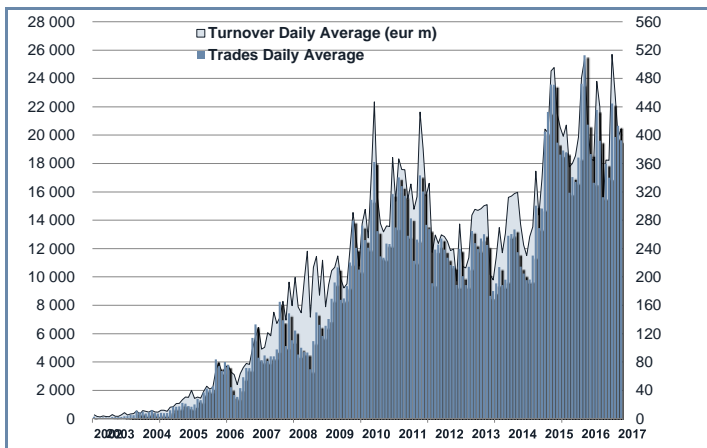
MOST TRADED IN THE YEAR BY TURNOVER AND RELATIVE SPREAD

Name	Alphab.	ISIN	TURNOVER eur m	% TOT	BBO	SPREAD 25 000 €
1 BOOST WTI OIL 3X LEVERAGE DAILY	3OIL	IE00B7ZQC614	549	3.2%	0.18%	0.21%
2 LYXOR UCITS ETF FTSE MIB	ETFMIB	FR0010010827	539	3.2%	0.05%	0.05%
3 ISHARES EURO STOXX 50 UCITS ETF EUR DIST	EUE	IE0008471009	416	2.5%	0.05%	0.05%
4 LYXOR UCITS ETF FTSE MIB DAI DOU SHT XBR	XBRMB	FR0010446658	344	2.0%	0.14%	0.15%
5 LYXOR UCITS ETF FTSE MIB DAILY LEVERAGED	LEVMB	FR0010446658	335	2.0%	0.10%	0.11%
6 BOOST WTI OIL 3X SHORT DAILY	3OIS	IE00B7SX5Y86	283	1.7%	0.15%	0.25%
7 ISHARES STOXX EUROPE 600 UCITS ETF	EXSA	DE0002635307	275	1.6%	0.05%	0.05%
8 LYXOR EURO STOXX 50 (DR) UCITS ETF	MSE	FR0007054358	274	1.6%	0.05%	0.05%
9 ETFS PHYSICAL GOLD	PHAU	JE00B1VS3770	272	1.6%	0.05%	0.05%
10 ISHARES CORE S&P 500 UCITS ETF USD ACC	CSSPX	IE00B58MR087	247	1.5%	0.04%	0.04%

**TRADING BY SIZE OF TURNOVER**

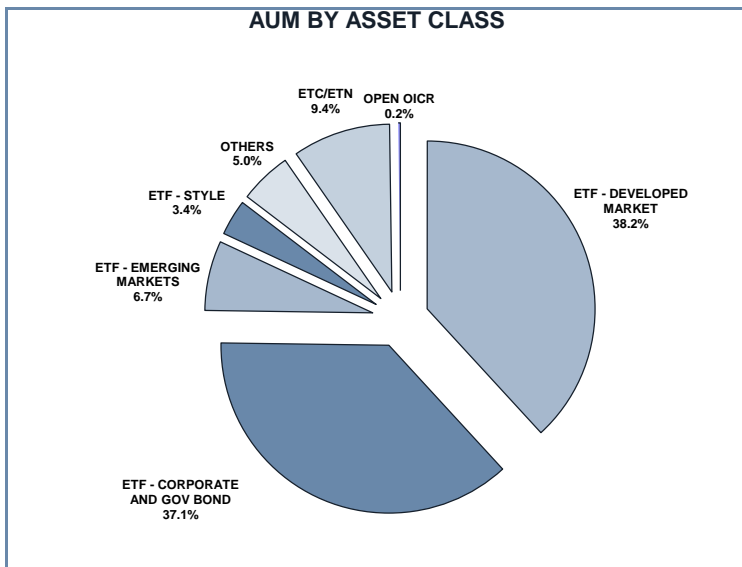
SIZE OF TURNOVER		JANUARY 2017		FEBRUARY 2017		YEAR 2017			
		Trades	Turnover eur m	Trades	Turnover eur m	Trades	% TOT	Turnover eur m	% TOT
-	500	45 633	11.7	34 136	8.6	79 769	9.4%	20.2	0.1%
500	1 000	39 339	29.6	30 055	22.4	69 394	8.2%	52.0	0.3%
1 000	2 000	60 004	87.2	48 987	71.1	108 991	12.9%	158.3	0.9%
2 000	3 000	42 243	104.0	37 409	92.3	79 652	9.4%	196.3	1.2%
3 000	4 000	30 154	103.9	26 145	90.0	56 299	6.6%	193.9	1.1%
4 000	5 000	26 488	119.9	22 767	102.9	49 255	5.8%	222.8	1.3%
5 000	6 000	21 871	118.8	19 862	107.7	41 733	4.9%	226.5	1.3%
6 000	7 000	15 783	102.1	14 527	93.7	30 310	3.6%	195.8	1.2%
7 000	8 000	10 799	80.8	10 153	75.9	20 952	2.5%	156.7	0.9%
8 000	9 000	9 446	80.3	7 730	65.6	17 176	2.0%	145.9	0.9%
9 000	10 000	15 217	145.6	12 881	123.0	28 098	3.3%	268.6	1.6%
10 000	15 000	45 331	555.6	36 625	444.3	81 956	9.7%	999.9	5.9%
15 000	20 000	17 739	309.1	17 548	305.1	35 287	4.2%	614.2	3.6%
20 000	25 000	11 816	262.9	12 321	274.4	24 137	2.8%	537.3	3.2%
25 000	30 000	8 998	247.5	9 321	255.1	18 319	2.2%	502.6	3.0%
30 000	35 000	7 785	252.0	8 079	261.8	15 864	1.9%	513.7	3.0%
35 000	40 000	5 115	191.5	4 604	172.3	9 719	1.1%	363.8	2.2%
40 000	45 000	4 628	196.7	3 833	163.0	8 461	1.0%	359.7	2.1%
45 000	50 000	4 602	218.6	4 444	210.2	9 046	1.1%	428.8	2.5%
50 000	75 000	9 190	552.9	9 853	593.5	19 043	2.2%	1 146.3	6.8%
75 000	100 000	6 426	564.2	6 477	569.1	12 903	1.5%	1 133.2	6.7%
100 000	125 000	4 284	475.4	4 414	493.2	8 698	1.0%	968.6	5.7%
125 000	150 000	2 275	312.2	2 400	326.6	4 675	0.6%	638.8	3.8%
150 000		9 410	3 617.7	8 214	3 258.7	17 624	2.1%	6 876.5	40.6%
<b>TOTAL</b>		<b>454 576</b>	<b>8 739.9</b>	<b>392 785</b>	<b>8 180.5</b>	<b>847 361</b>		<b>16 920.4</b>	

**TRADING EVOLUTION**



**FOCUS**

MONTH	INSTRUMENT WITH HIGHEST TURNOVER		INSTRUMENT WITH HIGHEST TRADES NUMBER	
	ALPHA CODE	EUR	ALPHA CODE	NUMBER
FEBRUARY	ETFMIB	741 045 647	3OIL	72 981
MARCH	3OIL	412 423 647	3OIL	51 587
APRIL	3OIL	472 318 724	3OIL	49 662
MAY	3OIL	561 097 655	3OIL	39 590
JUNE	3OIL	581 813 908	3OIL	44 305
JULY	3OIL	324 603 533	3OIL	46 583
AUGUST	3OIL	318 887 480	3OIL	43 784
SEPTEMBER	3OIL	370 177 852	3OIL	44 436
OCTOBER	3OIL	293 240 552	3OIL	25 522
NOVEMBER	3OIL	339 329 921	3OIL	41 279
DECEMBER	ETFMIB	477 326 071	3OIL	27 198
JANUARY 2017	3OIL	306 062 721	3OIL	27 427
FEBRUARY	ETFMIB	294 127 552	3OIL	21 421



## SPREAD

	SPREAD							
	BBO		5 000 €		15 000 €		25 000 €	
	SPREAD	% OBSER	SPREAD	% OBSER	SPREAD	% OBSER	SPREAD	% OBSER
<b>ETF - DEVELOPED MARKET</b>	<b>0.09%</b>	<b>100.00%</b>	<b>0.09%</b>	<b>100.00%</b>	<b>0.09%</b>	<b>100.00%</b>	<b>0.09%</b>	<b>99.99%</b>
EQUITY ITALY	0.08%	100.00%	0.09%	100.00%	0.09%	100.00%	0.09%	100.00%
EQUITY EUROPE - REGIONAL	0.07%	100.00%	0.07%	100.00%	0.08%	100.00%	0.08%	100.00%
EQUITY EUROPE - SINGLE COUNTRY	0.10%	100.00%	0.10%	100.00%	0.10%	100.00%	0.11%	99.99%
EQUITY WORLD	0.11%	100.00%	0.11%	100.00%	0.11%	99.99%	0.11%	99.99%
EQUITY NORTH AMERICA	0.07%	100.00%	0.07%	100.00%	0.07%	100.00%	0.07%	100.00%
EQUITY PACIFIC	0.14%	100.00%	0.14%	100.00%	0.14%	100.00%	0.14%	99.98%
EQUITY SHORT (DEVELOPED)	0.11%	100.00%	0.12%	100.00%	0.12%	99.99%	0.12%	99.99%
BUYWRITE - COVERED CALL	0.00%	0.00%	0.00%	0.00%	0.00%	0.00%	0.00%	0.00%
LEVERAGED LONG	0.11%	100.00%	0.11%	100.00%	0.11%	100.00%	0.11%	100.00%
LEVERAGED SHORT	0.15%	100.00%	0.15%	100.00%	0.15%	100.00%	0.15%	100.00%
PROTECTIVE PUT	0.00%	0.00%	0.00%	0.00%	0.00%	0.00%	0.00%	0.00%
<b>ETF - EMERGING MARKETS</b>	<b>0.16%</b>	<b>100.00%</b>	<b>0.17%</b>	<b>100.00%</b>	<b>0.17%</b>	<b>99.99%</b>	<b>0.18%</b>	<b>99.96%</b>
EQUITY EMERGING - AFRICA/MIDDLE EAST	0.43%	100.00%	0.45%	99.99%	0.49%	99.94%	0.52%	99.62%
EQUITY EMERGING - ASIA	0.22%	100.00%	0.23%	99.99%	0.24%	99.99%	0.25%	99.95%
EQUITY EMERGING - CENTRE/SOUTH AMERICA	0.32%	100.00%	0.34%	100.00%	0.35%	99.99%	0.37%	99.85%
EQUITY EMERGING - EAST EUROPE	0.20%	100.00%	0.21%	100.00%	0.22%	99.98%	0.22%	99.95%
EQUITY EMERGING - WORLD	0.10%	100.00%	0.10%	100.00%	0.10%	100.00%	0.10%	99.98%
EQUITY SHORT (EMERGING)	0.00%	0.00%	0.00%	0.00%	0.00%	0.00%	0.00%	0.00%
<b>ETF - CORPORATE GOVERNMENT BONDS</b>	<b>0.08%</b>	<b>100.00%</b>	<b>0.08%</b>	<b>100.00%</b>	<b>0.09%</b>	<b>100.00%</b>	<b>0.09%</b>	<b>99.97%</b>
INFLATION	0.12%	100.00%	0.13%	99.99%	0.13%	99.99%	0.13%	99.97%
LIQUIDITY	0.03%	100.00%	0.03%	100.00%	0.03%	100.00%	0.03%	99.99%
CORPORATE BOND - EURO	0.07%	100.00%	0.07%	100.00%	0.07%	100.00%	0.07%	99.98%
CORPORATE BOND - EX EURO	0.10%	100.00%	0.10%	100.00%	0.10%	100.00%	0.10%	99.98%
CORPORATE BOND - EMERGING	0.33%	100.00%	0.34%	100.00%	0.35%	99.99%	0.36%	99.98%
CORPORATE BOND - WORLD	0.16%	100.00%	0.17%	100.00%	0.17%	100.00%	0.18%	100.00%
CORPORATE BOND - HIGH YIELD	0.09%	100.00%	0.09%	100.00%	0.10%	100.00%	0.10%	100.00%
AGGREGATE BOND	0.12%	100.00%	0.13%	99.92%	0.13%	99.92%	0.12%	99.24%
BOND SHORT	0.11%	100.00%	0.11%	100.00%	0.11%	100.00%	0.11%	99.98%
BOND LEVERAGED LONG	0.09%	100.00%	0.09%	100.00%	0.09%	100.00%	0.09%	100.00%
BOND LEVERAGED SHORT	0.05%	100.00%	0.05%	100.00%	0.05%	100.00%	0.06%	100.00%
GOVERNMENT BONDS - EMERGING	0.13%	100.00%	0.13%	100.00%	0.13%	99.99%	0.14%	99.96%
GOVERNMENT BONDS - EURO	0.06%	100.00%	0.06%	100.00%	0.06%	100.00%	0.06%	99.98%
GOVERNMENT BONDS - ITALY	0.06%	100.00%	0.06%	100.00%	0.07%	100.00%	0.07%	99.99%
GOVERNMENT BONDS - WORLD	0.14%	100.00%	0.15%	100.00%	0.16%	100.00%	0.17%	100.00%
GOVERNMENT BONDS - EX EURO	0.10%	100.00%	0.10%	100.00%	0.10%	100.00%	0.11%	100.00%
<b>ETF - STYLE</b>	<b>0.21%</b>	<b>100.00%</b>	<b>0.21%</b>	<b>100.00%</b>	<b>0.21%</b>	<b>99.99%</b>	<b>0.22%</b>	<b>99.97%</b>
EQUITY STYLE (DEVELOPED)	0.20%	100.00%	0.21%	100.00%	0.21%	99.99%	0.21%	99.97%
EQUITY STYLE (EMERGING)	0.48%	100.00%	0.49%	99.94%	0.50%	99.93%	0.51%	99.87%
<b>ETF - OTHERS</b>	<b>0.23%</b>	<b>100.00%</b>	<b>0.24%</b>	<b>99.99%</b>	<b>0.25%</b>	<b>99.95%</b>	<b>0.26%</b>	<b>99.65%</b>
EQUITY SECTORS (DEVELOPED)	0.20%	100.00%	0.21%	100.00%	0.21%	100.00%	0.21%	99.98%
EQUITY SECTORS (EMERGING)	0.00%	0.00%	0.00%	0.00%	0.00%	0.00%	0.00%	0.00%
EQUITY THEMATIC	0.33%	100.00%	0.34%	99.96%	0.36%	99.82%	0.38%	99.42%
COMMODITIES	0.20%	100.00%	0.20%	100.00%	0.21%	100.00%	0.21%	99.97%
CREDIT INDICES	0.29%	100.00%	0.30%	100.00%	0.32%	100.00%	0.33%	100.00%
REAL ESTATE	0.19%	100.00%	0.19%	100.00%	0.19%	100.00%	0.20%	100.00%
LEVERAGED CREDIT INDICES	0.00%	0.00%	0.00%	0.00%	0.00%	0.00%	0.00%	0.00%
VOLATILITY INDICES	0.36%	100.00%	0.45%	100.00%	0.60%	99.44%	0.73%	86.60%
CURRENCIES INDICES	0.00%	0.00%	0.00%	0.00%	0.00%	0.00%	0.00%	0.00%
FLEXIBLE	0.66%	100.00%	0.68%	99.55%	0.72%	99.50%	0.73%	98.46%
<b>ETF</b>	<b>0.10%</b>	<b>100.00%</b>	<b>0.11%</b>	<b>100.00%</b>	<b>0.11%</b>	<b>99.99%</b>	<b>0.11%</b>	<b>99.96%</b>

Data obtained from 1 minute snapshots of the trading book (5 levels) during trading days of the relevant month.

Market Spread: means the difference between bid and ask prices divided by the mid quote at which it was possible to buy and sell simultaneously the relevant amount.

% Obser: means the percentage of observations at which it would be possible to buy and sell simultaneously the relevant amount.

The average showed is the weighted average on AUM deposited in Monte Titoli is used: it's the average calculated taking into account the AUM (asset under management) deposited in Monte Titoli.

#### News

During the last month, the following 12 instruments were listed on ETFplus market:

- 1 New Millennium open fund
- 1 corporate bond high yield ETF, 1 government bond emerging ETF, 4 equity ETFs and 2 leverage 3x ETCs issued by Lyxor
- 2 UBS equity world and north America ETFs and 1 corporate bond ETF

These new instruments bring to 1,176 the number of products listed on ETFplus market (743 ETFs, 304 ETCs/ETNs and 129 Open Funds).

#### Markets Analysis

Piazza degli Affari, 6 - 20123 Milano  
T +39 02 724261 | Fax +39 02 8646.4323  
e-mail: markets\_analysis@borsaitaliana.it  
[www.borsaitaliana.it](http://www.borsaitaliana.it)

This document contains text, data, graphics, photographs, illustrations, artwork, names, logos, trade marks, service marks and information ("Information") connected with Borsa Italiana S.p.A. ("Borsa Italiana").

All reasonable efforts have been made to ensure that the Information in this document was correct at the time of publication. However, Borsa Italiana Spa accepts no liability for decisions taken, or systems-related or other work carried out by any party based on this document. The publication of this document does not represent solicitation, by Borsa Italiana, of public saving and is not to be considered as a recommendation by Borsa Italiana as to the suitability of the investment, if any, herein described.